

Abell House John Islip Street, Westminster, London SW1P 4FE

The property offers plenty of living space with high quality finishings and modern appliances, while impressive floor-to-ceiling windows that create loads of natural light. The apartment is for sale with 2 allocated secure underground parking spaces.

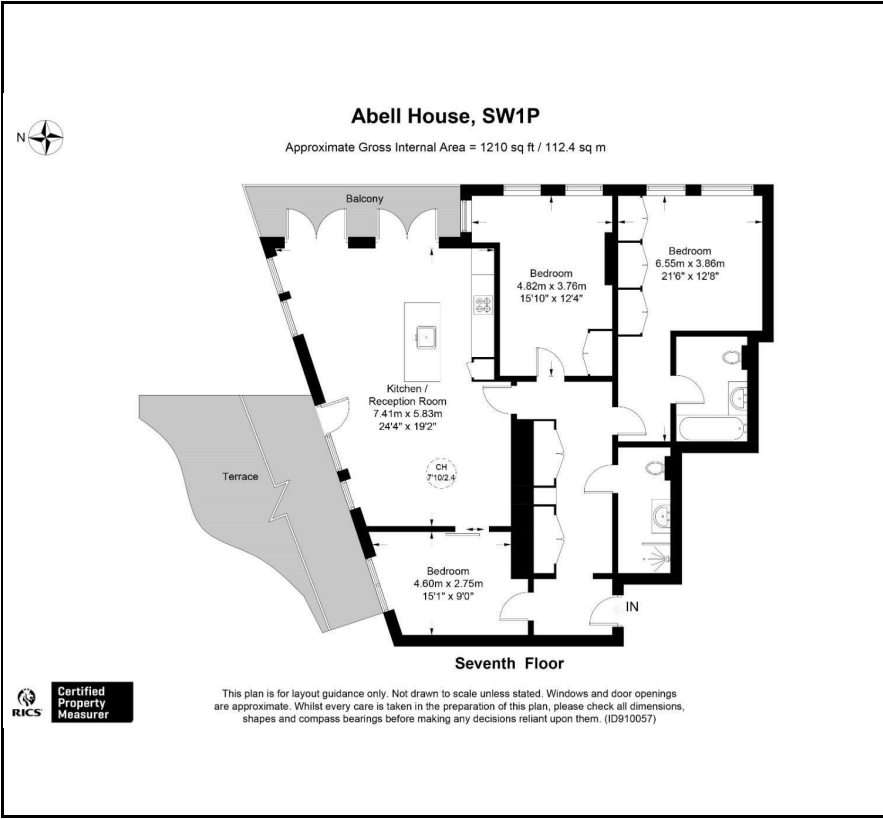
Abell House is a well known development in the heart of Westminster, minutes away from London's most historical landmarks. The development offers a wide range of facilities such as a health spa with a gym and swimming pool, 24 hours concierge service and communal gardens.

Transport connections:

Price £2,500,000

- 3 bedrooms
- 2 bathrooms
- 7th floor
- Private Terrace
- Balcony
- 24/7 Concierge
- Pool
- Gym
- 2 underground parking spaces

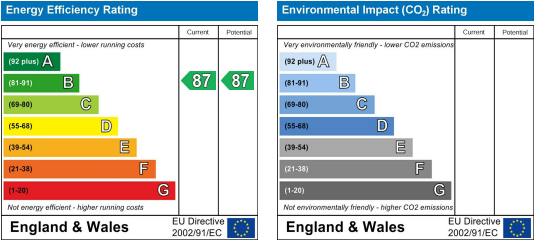
Floor Plan



Area Map



Energy Efficiency Graph

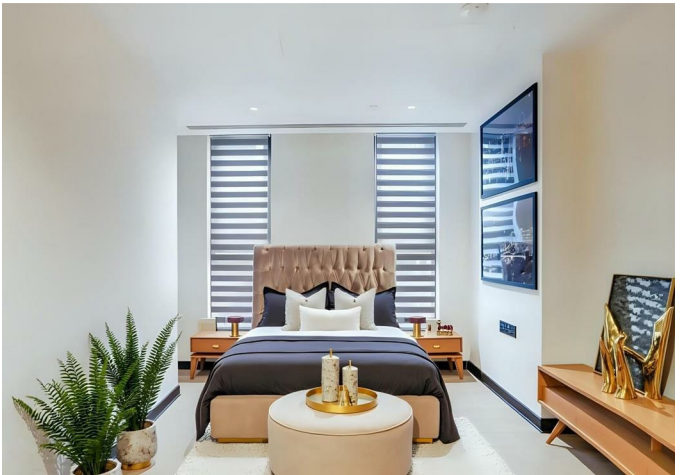


Viewing

Please contact our AZ Real Estate Office on 0203 871 4074 if you wish to arrange a viewing appointment for this property or require further information.

- 13 minutes walk to St. James' Park underground station
- 10 minutes walk to Pimlico underground station
- 10 minutes walk to Millbank Pier

Tenure - Leasehold
Length of lease (years remaining) - 999 from 2013 (990 years remaining)
Annual ground rent amount (£) - £900
Annual service charge amount (£) - approx. £14,500
Council tax band (England) - G



These particulars, whilst believed to be accurate are set out as a general outline only for guidance and do not constitute any part of an offer or contract. Intending purchasers should not rely on them as statements of representation of fact, but must satisfy themselves by inspection or otherwise as to their accuracy. No person in this firm's employment has the authority to make or give any representation or warranty in respect of the property.

7 Marylebone Lane, London, W1U 1DB
T: 0203 871 4074 | welcome@azrealestate.eu