



REAL
ESTATE

Triptych Bankside, Triptych Place, London SE1 9RD

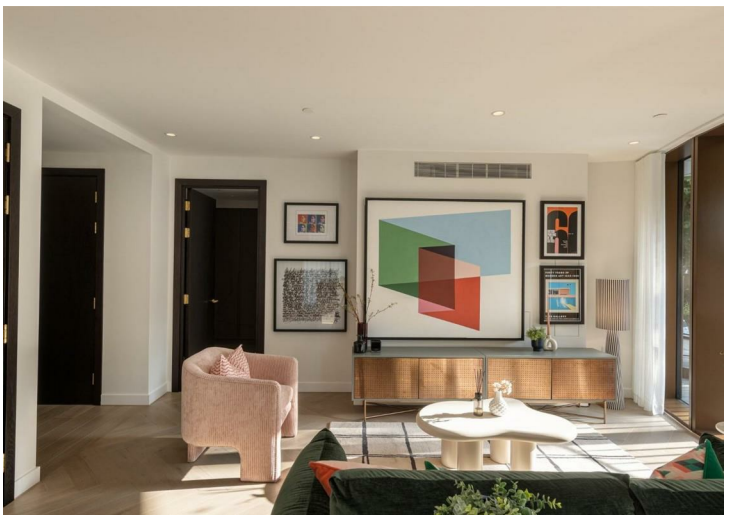
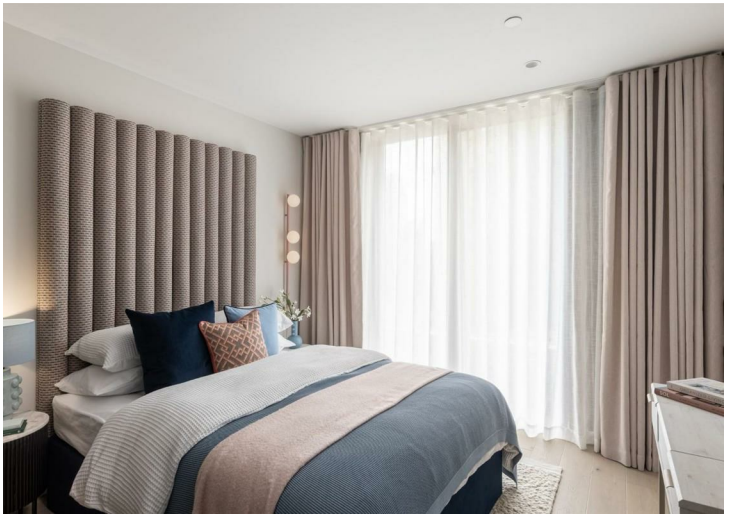


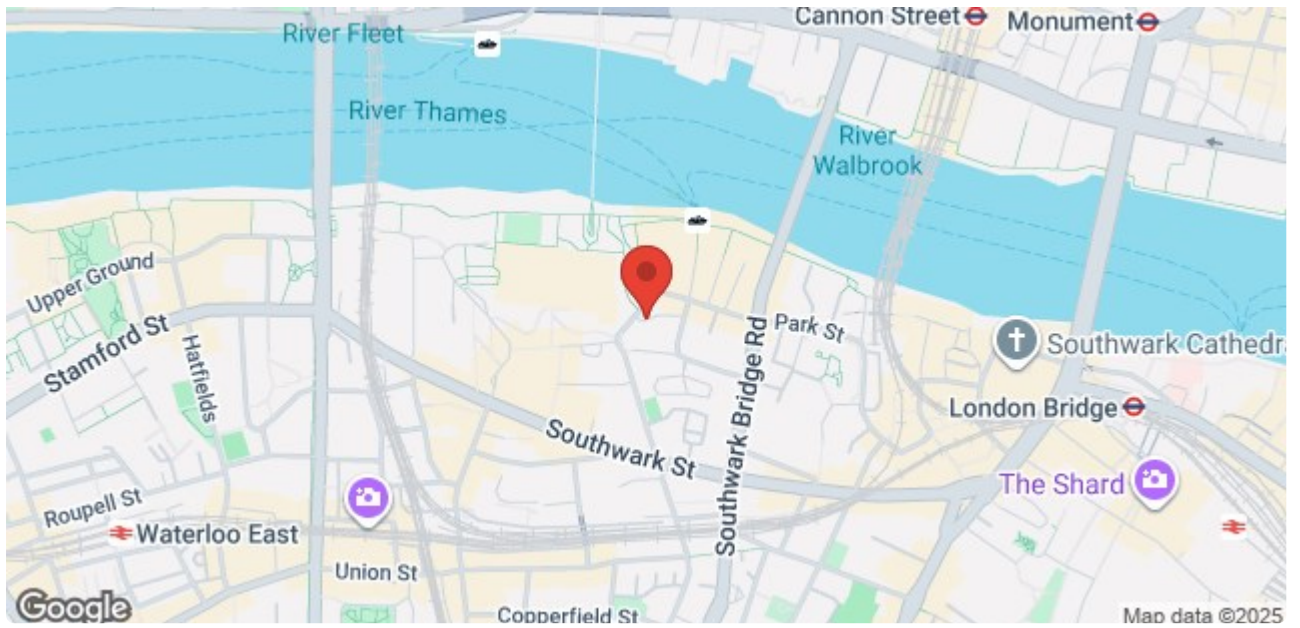
- 3 bed Apartment
- Private screening room & Games room
- 24-Hour concierge and security
- Beautiful Terrace
- Business lounge
- Underground parking available
- Landscaped gardens
- Please note some images are for indicative purposes only

The residences consist of two towers, 14 and 18 storeys respectively. All 169 of the open-plan, light-filled apartments uniquely benefit from private balconies with stunning views.

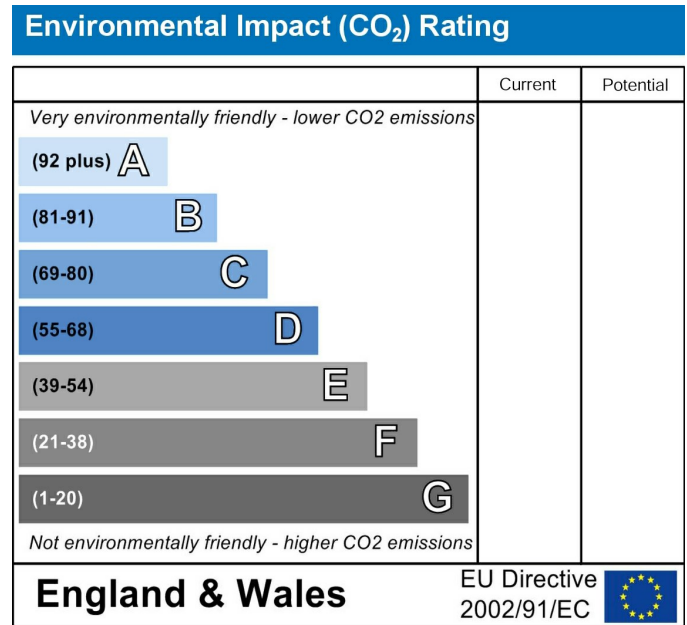
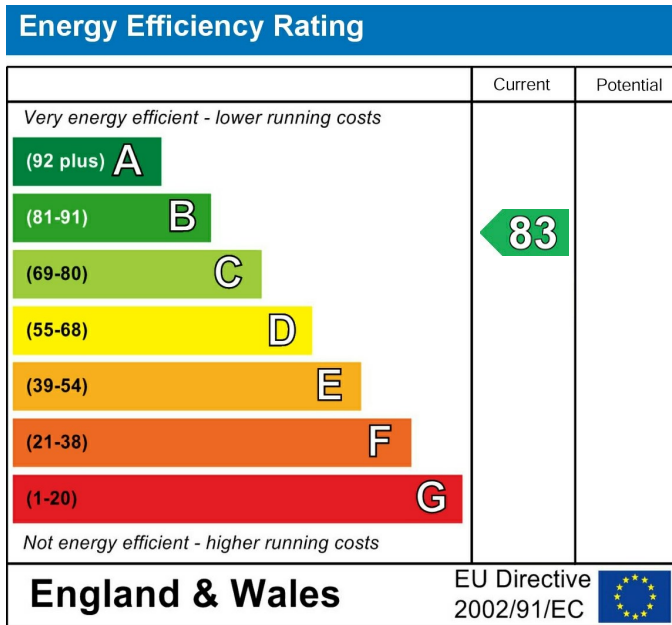
£2,795,000

7 Marylebone Lane, London, W1U 1DB
T: 0203 871 4074 | welcome@azrealestate.eu





UNIT FLOOR PLAN - W.207



Situated in the West Building this 3 Beds offers 1466 Square Feet on level 2. The beautiful mixed-use development designed by renowned London architects Squire & Partners on the Southbank of London. Undulating curves of the façade present a fresh and distinct contrast to the homogeneous silhouette of symmetric towers marking London's skyline.

These particulars, whilst believed to be accurate are set out as a general outline only for guidance and do not constitute any part of an offer or contract. Intending purchasers should not rely on them as statements of representation of fact, but must satisfy themselves by inspection or otherwise as to their accuracy. No person in this firm's employment has the authority to make or give any representation or warranty in respect of the property.

7 Marylebone Lane, London, W1U 1DB
T: 0203 871 4074 | welcome@azrealestate.eu