



REAL  
ESTATE

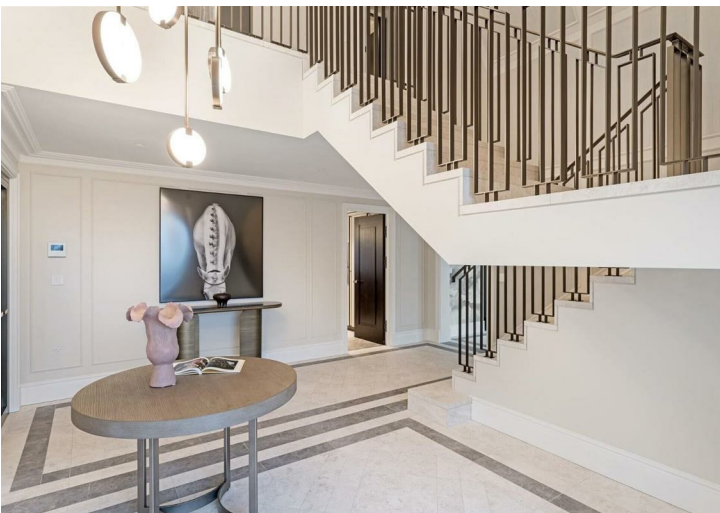
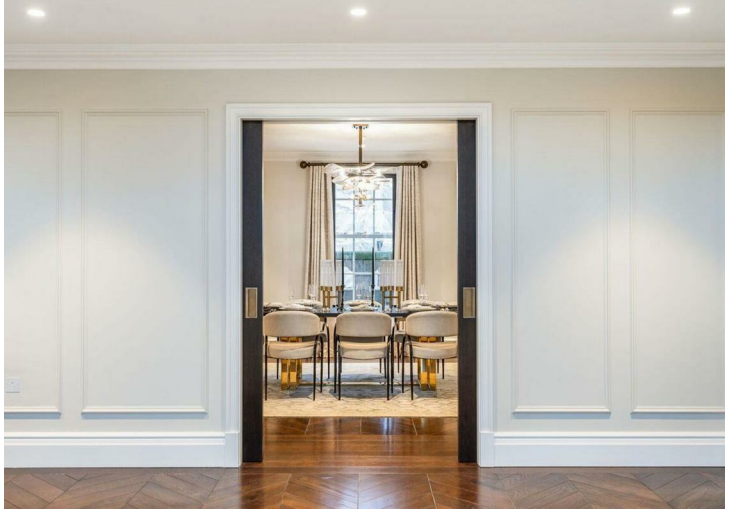
## Knightsbridge Gate, , London



- 6 Bedrooms
- 7 Bathrooms
- Lift
- Terrace / Balcony
- Concierge
- Penthouse
- Private Parking
- Duplex
- Communal Garden
- New Build

**£25,000,000**

7 Marylebone Lane, London, W1U 1DB  
T: 0203 871 4074 | [welcome@azrealestate.uk](mailto:welcome@azrealestate.uk)





APARTMENT 6  
55 KNIGHTSBRIDGE  
6 BED ROOM

LOWER FLOOR


DUPLEX  
LEVEL 4


- PB Principal Bedroom
- PD Principal Dressing
- PE Principal Ensuite
- R Reception
- R2 Reception 2
- R3 Reception 3
- D Dining
- B2 Bedroom 2
- B3 Bedroom 3
- B4 Bedroom 4
- B5 Bedroom 5
- E Ensuite
- K Kitchen
- C Cloakroom
- L Laundry
- T Terrace



Room	Meters	Feet	Ceiling Heights (m)	Room	Meters	Feet	Ceiling Heights (m)
Hallway	19.85 x 2.60	64 x 8.6	2.43	Ensuite 3	2.18 x 2.77	10.5 x 9.1	2.41
Stair Hall	5.38 x 5.34	17.7 x 17.6	2.43	Bedroom 4	3.47 x 4.20	11.4 x 13.8	2.55
Sitting Room	5.70 x 3.46	18.7 x 11.4	2.59	Ensuite 4	2.52 x 2.09	7.9 x 6.8	2.41
Reception 1	8.59 x 5.79	28 x 19	2.69	Bedroom 5	3.45 x 3.98	11.5 x 12.9	2.61
Reception 2	6.55 x 4.92	21.5 x 16.1	2.59	Ensuite 5	2.29 x 1.99	7.5 x 6.5	2.60
Dining	5.41 x 4.97	17.8 x 16	2.58	Bedroom 6	4.59 x 4.00	15.1 x 13.1	2.58
Kitchen	5.74 x 3.20	18.8 x 10.5	2.56	Ensuite 6	1.82 x 3.70	6 x 12.1	2.42
Cloakroom	2.28 x 3.03	7.5 x 10	2.4	<b>Total Interior Area</b>	<b>577.3 sqm</b>	<b>6,214 sq ft</b>	
Laundry	2.86 x 1.70	9.4 x 5.6	2.27	<b>Total Exterior Area</b>	<b>65.2 sqm</b>	<b>701 sq ft</b>	
Bedroom 3	3.36 x 4.25	11 x 13.9	2.48				



Energy Efficiency Rating		
	Current	Potential
<i>Very energy efficient - lower running costs</i>		
(92 plus) <b>A</b>		
(81-91) <b>B</b>		
(69-80) <b>C</b>		
(55-68) <b>D</b>		
(39-54) <b>E</b>		
(21-38) <b>F</b>		
(1-20) <b>G</b>		
<i>Not energy efficient - higher running costs</i>		
<b>England &amp; Wales</b>	EU Directive 2002/91/EC	

Environmental Impact (CO <sub>2</sub> ) Rating		
	Current	Potential
<i>Very environmentally friendly - lower CO<sub>2</sub> emissions</i>		
(92 plus) <b>A</b>		
(81-91) <b>B</b>		
(69-80) <b>C</b>		
(55-68) <b>D</b>		
(39-54) <b>E</b>		
(21-38) <b>F</b>		
(1-20) <b>G</b>		
<i>Not environmentally friendly - higher CO<sub>2</sub> emissions</i>		
<b>England &amp; Wales</b>	EU Directive 2002/91/EC	

Introducing an extraordinary opportunity to own a rare six-bedroom penthouse in the heart of Knightsbridge, a development celebrated for its iconic Edwardian façade and world-class design. This 6,214 sq ft duplex residence, expertly curated by Bergman Design House, exemplifies luxury living at its finest, offering an exclusive lifestyle for the most discerning buyers.

These particulars, whilst believed to be accurate are set out as a general outline only for guidance and do not constitute any part of an offer or contract. Intending purchasers should not rely on them as statements of representation of fact, but must satisfy themselves by inspection or otherwise as to their accuracy. No person in this firm's employment has the authority to make or give any representation or warranty in respect of the property.

7 Marylebone Lane, London, W1U 1DB  
 T: 0203 871 4074 | [welcome@azrealestate.uk](mailto:welcome@azrealestate.uk)