



REAL
ESTATE

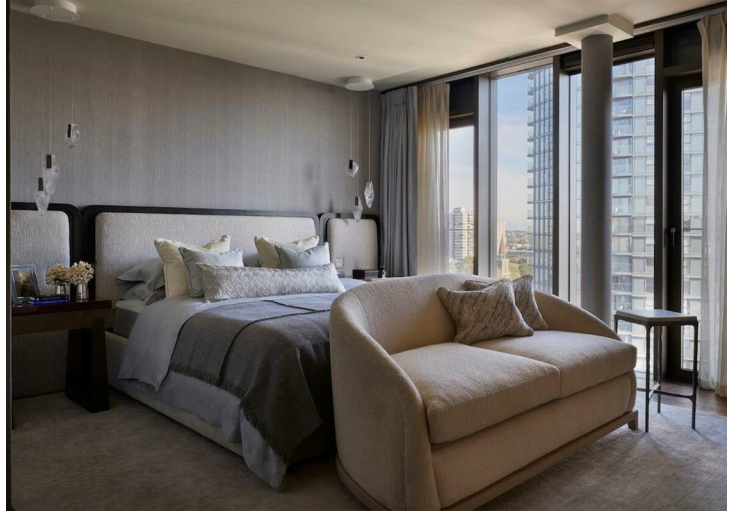
Lots Road, , London SW6

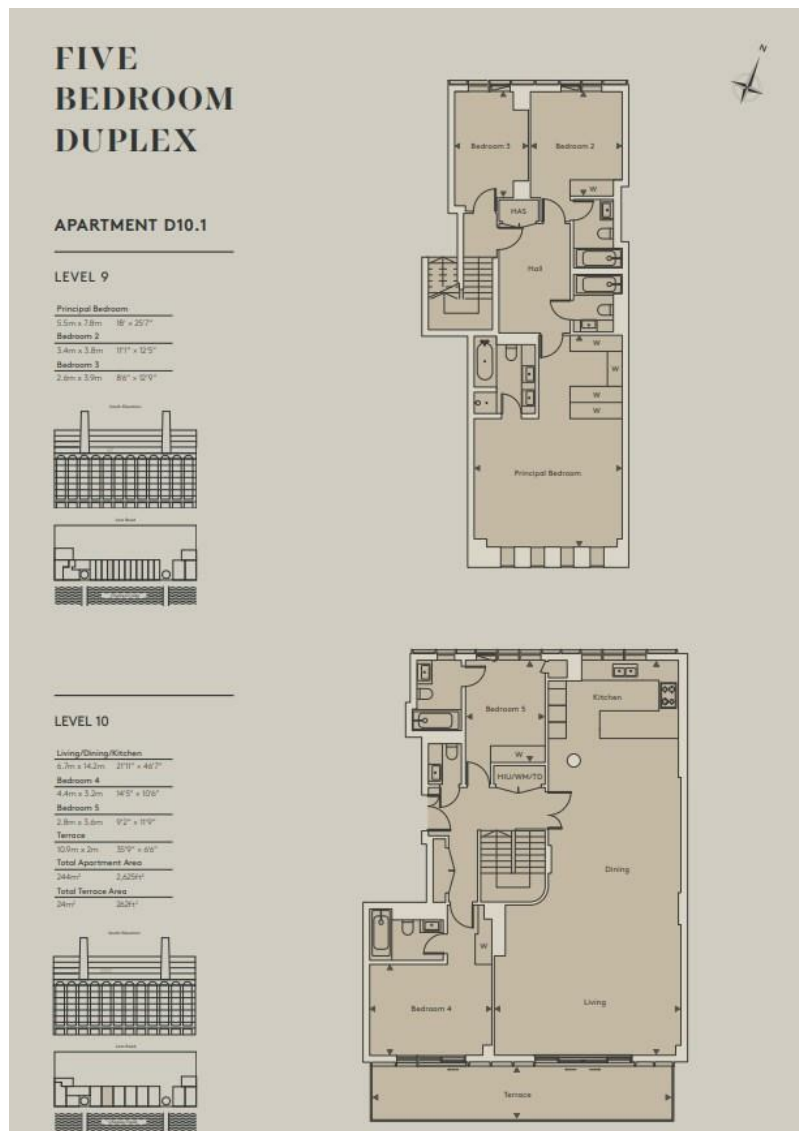



- 5 Bedrooms
- Terrace
- No Chain
- 5 Bathrooms
- New Home


£5,811,000

7 Marylebone Lane, London, W1U 1DB
T: 0203 871 4074 | welcome@azrealestate.uk





Energy Efficiency Rating		
	Current	Potential
<i>Very energy efficient - lower running costs</i>		
(92 plus) A		
(81-91) B		
(69-80) C		
(55-68) D		
(39-54) E		
(21-38) F		
(1-20) G		
<i>Not energy efficient - higher running costs</i>		
England & Wales	EU Directive 2002/91/EC	

Environmental Impact (CO ₂) Rating		
	Current	Potential
<i>Very environmentally friendly - lower CO₂ emissions</i>		
(92 plus) A		
(81-91) B		
(69-80) C		
(55-68) D		
(39-54) E		
(21-38) F		
(1-20) G		
<i>Not environmentally friendly - higher CO₂ emissions</i>		
England & Wales	EU Directive 2002/91/EC	

A commanding Luxury 2,596 sq ft five-bed masterpiece in Chelsea

These particulars, whilst believed to be accurate are set out as a general outline only for guidance and do not constitute any part of an offer or contract. Intending purchasers should not rely on them as statements of representation of fact, but must satisfy themselves by inspection or otherwise as to their accuracy. No person in this firm's employment has the authority to make or give any representation or warranty in respect of the property.

7 Marylebone Lane, London, W1U 1DB
 T: 0203 871 4074 | welcome@azrealestate.uk